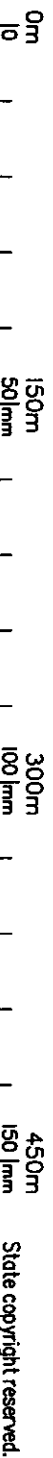


**Total Area of New Road**

8115m<sup>2</sup>



**Plan of Lots 107-111, 146, 601-619,  
701-715 & 803**

Canceling Lot 802 on SP234773

- Reg placed at all new corners, unless otherwise stated.*
- Original information compiled from SP234773 in the Department of Environment and Resource Management.*
- See sheet 3 for reference & permanent marks.*
- See sheet 3 for Lots 107, 110, 111 & 146*
- See sheet 4 for Lots 108, 109, 713 - 715 & 601-604*
- See sheet 5 for Lots 605-612 & 707-712*
- See sheet 6 for Lots 613-619 & 701-706*

I, Lance Edmund Hayes, hereby certify that the land comprised in this plan was surveyed by Brent David Goodwin, surveying graduate, for whose work I accept responsibility, and that the plan is accurate, that the said survey was performed in accordance with the Survey and Mapping Infrastructure Act 2003 and Surveyors Act 2003 and associated Regulations and Standards and that the said survey was completed on 23/7/2010

Cadastral Surveyor

Date: 13.8.2010

PARISH: **IPSWICH**  
Meridian: SP234773

COUNTY: **Stanley**

F/N/s: No

Plan Status:

Scale: **1:3000**  
Format: **STANDARD**  
SP234783

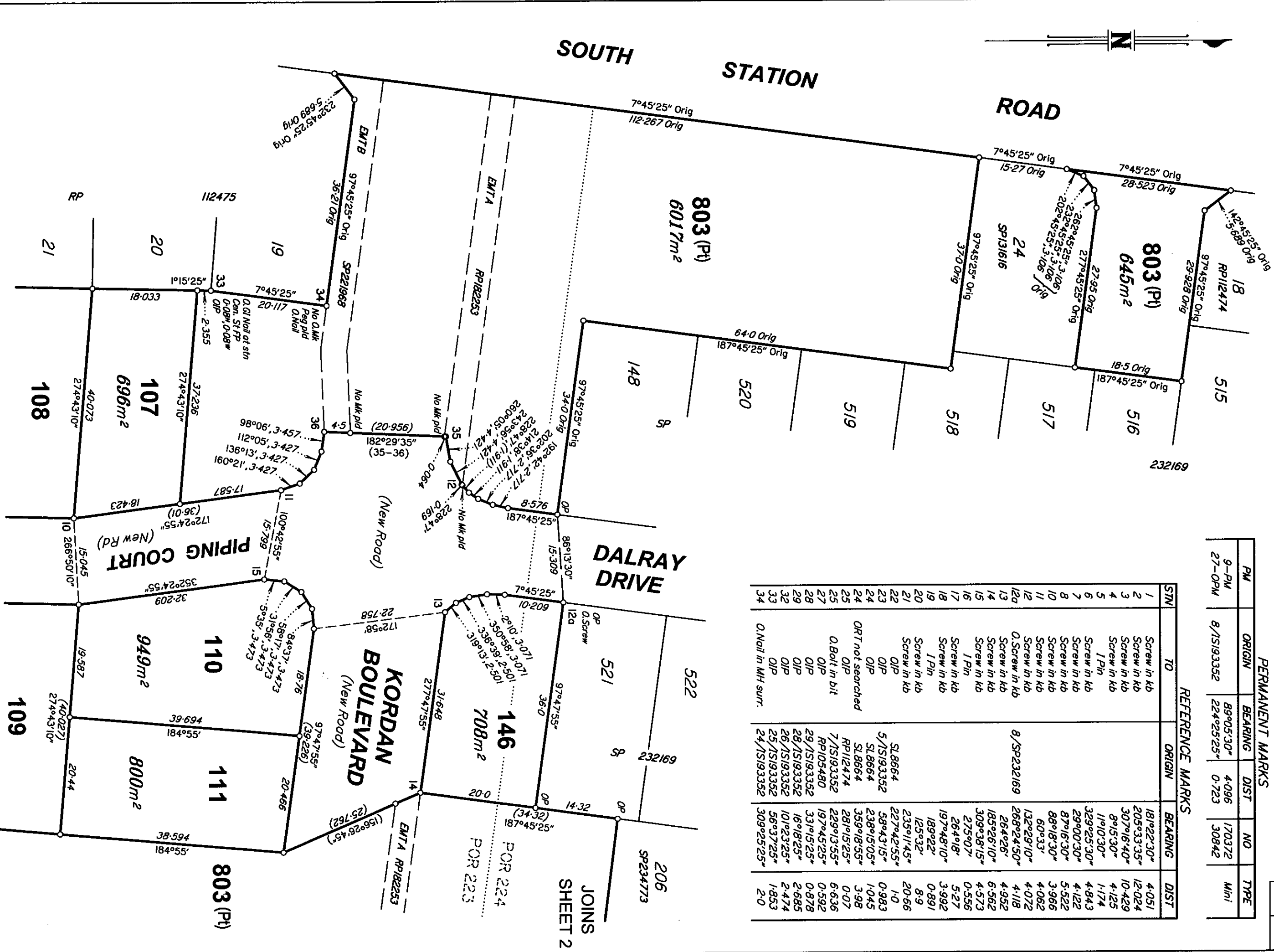




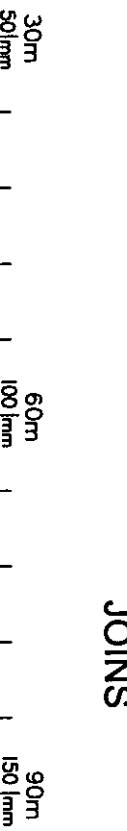


PM	ORIGIN	BEARING	DIST	NO	TYPE
9-PM	8/1S193352	89°05'30"	4.096	170372	Mini
27-OPM		22°42'25"	0.723	30842	

STN	TO	ORIGIN	BEARING	DIST
1	Screw in kb		181°22'30"	4.051
2	Screw in kb		205°33'35"	12.024
3	Screw in kb		307°16'40"	10.429
4	Screw in kb		8°15'30"	4.125
5	I Pin		11°10'30"	1.174
6	Screw in kb		329°25'30"	4.843
7	Screw in kb		29°00'30"	4.122
8	Screw in kb		87°16'30"	5.522
10	Screw in kb		88°18'30"	3.966
11	Screw in kb		60°33'	4.062
12	Screw in kb	8/SP232169	132°29'10"	4.072
12a	Screw in kb		268°24'50"	4.118
13	Screw in kb		264°26'	4.952
14	Screw in kb		185°26'10"	6.562
15	Screw in kb		309°38'15"	4.573
16	I Pin		275°07'	0.556
17	Screw in kb		264°18'	5.27
18	Screw in kb		197°48'10"	3.992
19	I Pin		189°22'	0.891
20	Screw in kb		125°32'	8.9
21	Screw in kb		235°11'45"	20.66
22	OIP		227°42'55"	1.0
23	OIP	5/1S193352	58°43'15"	0.983
24	OIP	SL8664	238°15'05"	1.045
24	OIP	SL8664	359°18'55"	3.98
25	OIP	RP112474	281°15'25"	0.07
25	OIP	7/1S193352	229°13'55"	6.636
27	OIP	RP105480	197°45'25"	0.592
28	OIP	29/1S193352	331°15'25"	0.878
29	OIP	28/1S193352	16°18'25"	2.685
29	OIP	26/1S193352	101°23'25"	2.474
32	OIP	25/1S193352	56°37'25"	1.853
33	OIP	24/1S193352	309°25'25"	2.0
34				



Scale 1:600



JOINS SHEET 4

State copyright reserved.  
SP234783



Scale 1:600

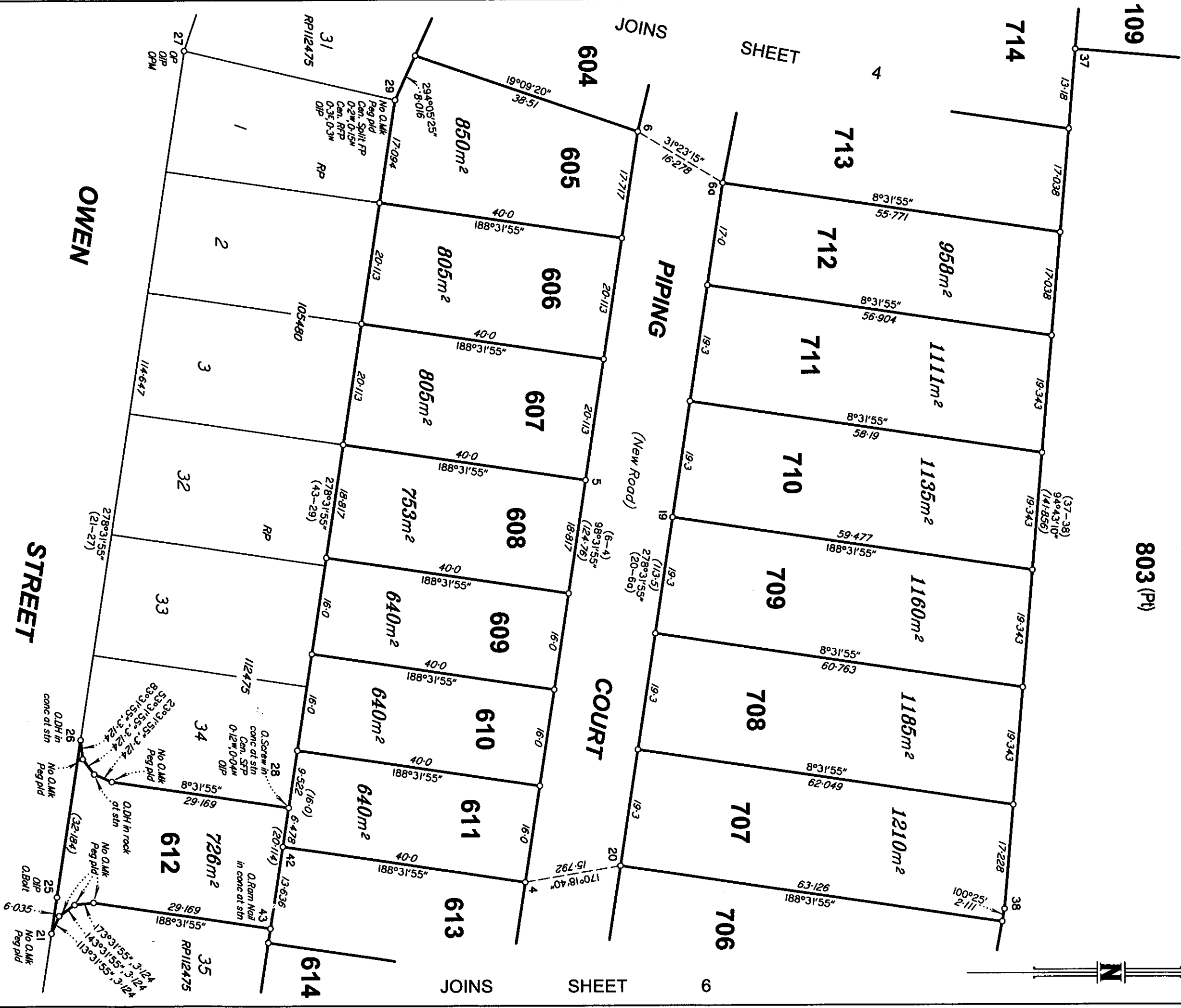
0m 30m 50mm

60m 100mm

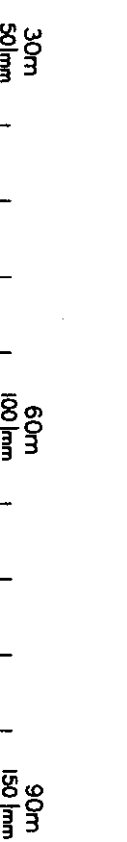
90m 150mm

Insert  
Plan  
Number  
**SP234783**

State copyright reserved.

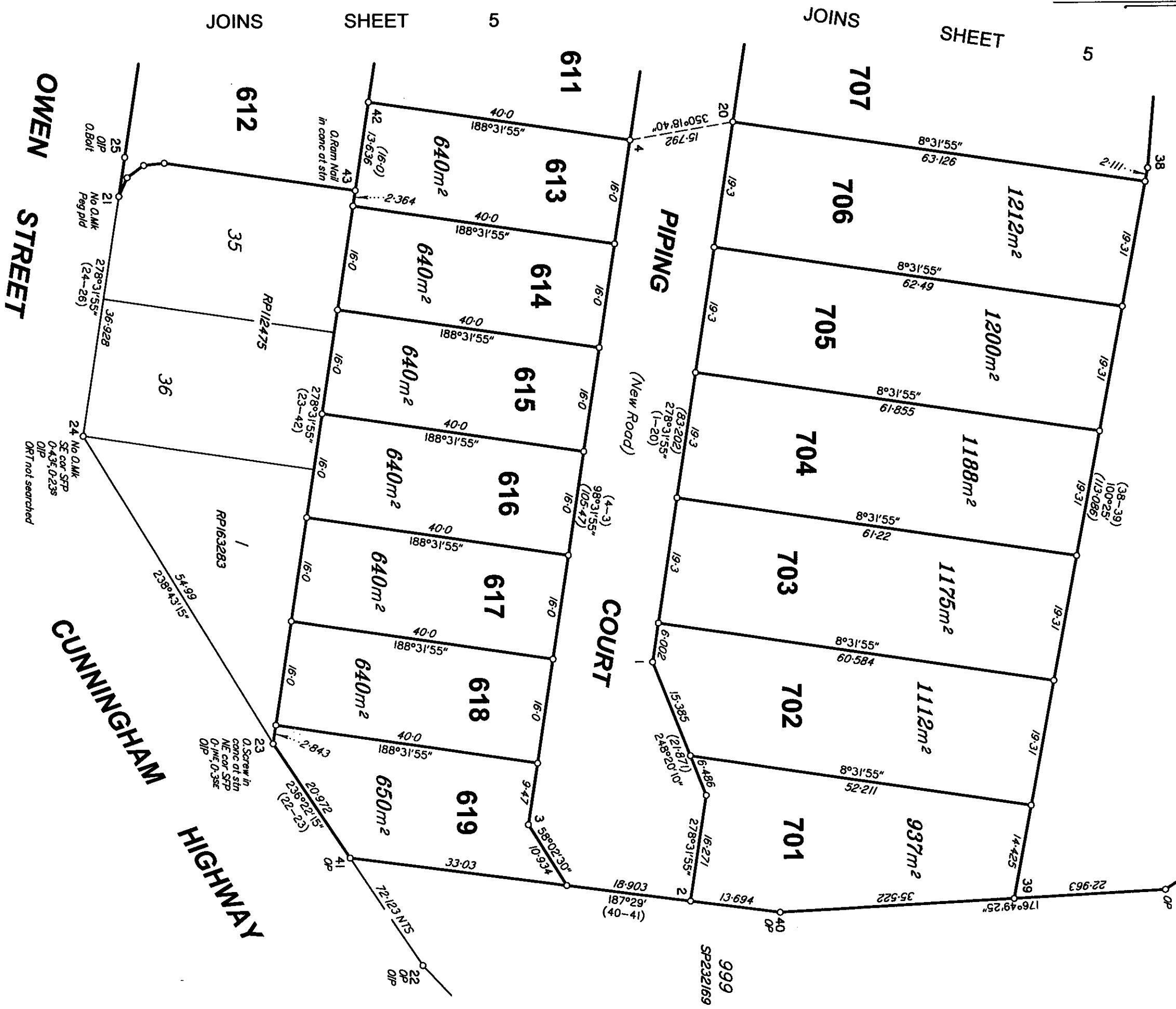


Scale 1:600



Insert Plan Number  
SP234783

State copyright reserved.



Scale 1:600

0m 30m 60m 90m  
50mm 100mm 150mm

Insert  
Plan  
Number  
**SP234783**

State copyright reserved.