

Land Title Act 1994; Land Act 1994
Form 21 Version 2

SURVEY PLAN

Sheet of
1 6

Req. placed at all new corners, unless otherwise stated.

Original information compiled from SL8664, SL11067, RP112474 & SP131616 in the Department of Environment and Resource Management.
See sheets 2 & 3 for Reference & Permanent Marks.
See sheet 2 for Lots 408-415
See sheet 3 for Lots 401-407 & 416-427
See sheet 4 for Lots 316-328
See sheet 5 for Lots 301-315

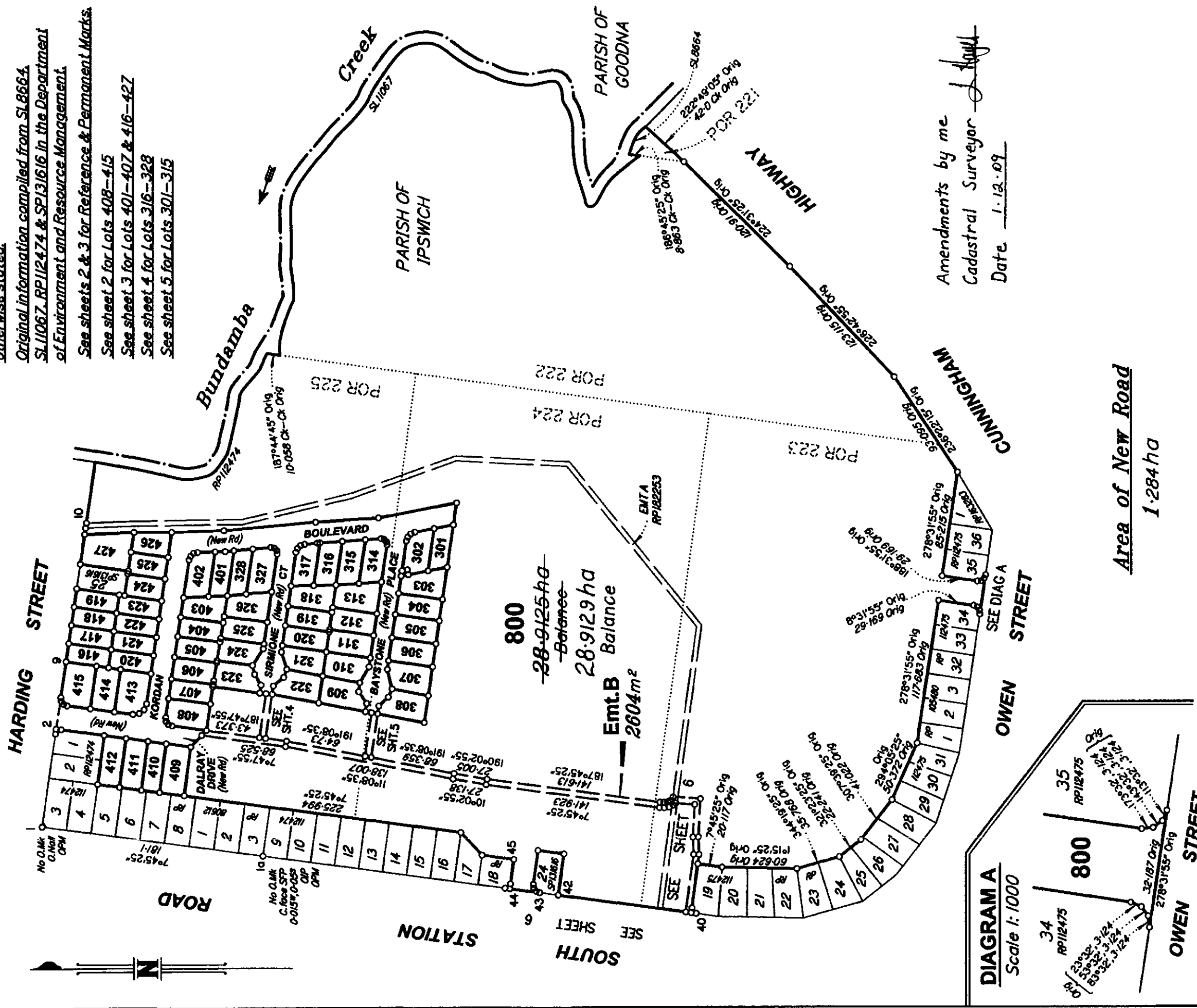
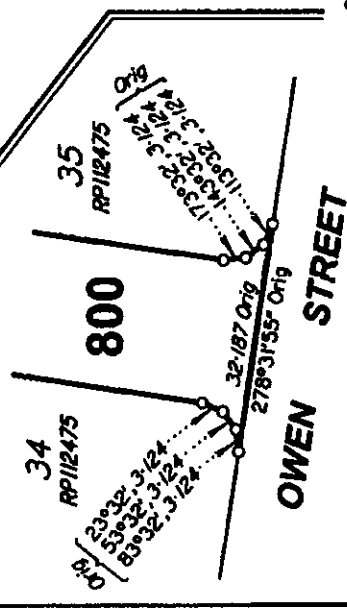


DIAGRAM A
Scale 1:1000



I, Lance Edmond Hayes, hereby certify that the land comprised in this plan was surveyed by Brent David Goodwin, surveying associate, for whose work I accept responsibility, and that the plan is accurate, that the said survey was performed in accordance with the Survey and Mapping Infrastructure Act 2003 and Surveyors Act 2003 and associated Regulations and Standards and that the said survey was completed on 7/10/2009.

[Signature]
Cadastral Surveyor
Date 7.10.2009

Amendments by me
Cadastral Surveyor *[Signature]*
Date 1.12.09

Area of New Road
1.284 ha

Plan of Lots 301-328, 401-427, 800
& Emt B in Lot 800

Cancelling Lot 223 on SP131616

Scale: 1:3000
Format: STANDARD

PARISH: IPSWICH COUNTY: Stanley
Meridian: MGA Zone 56 wide GNSS

F/N's: No

Plan Status: SP221968

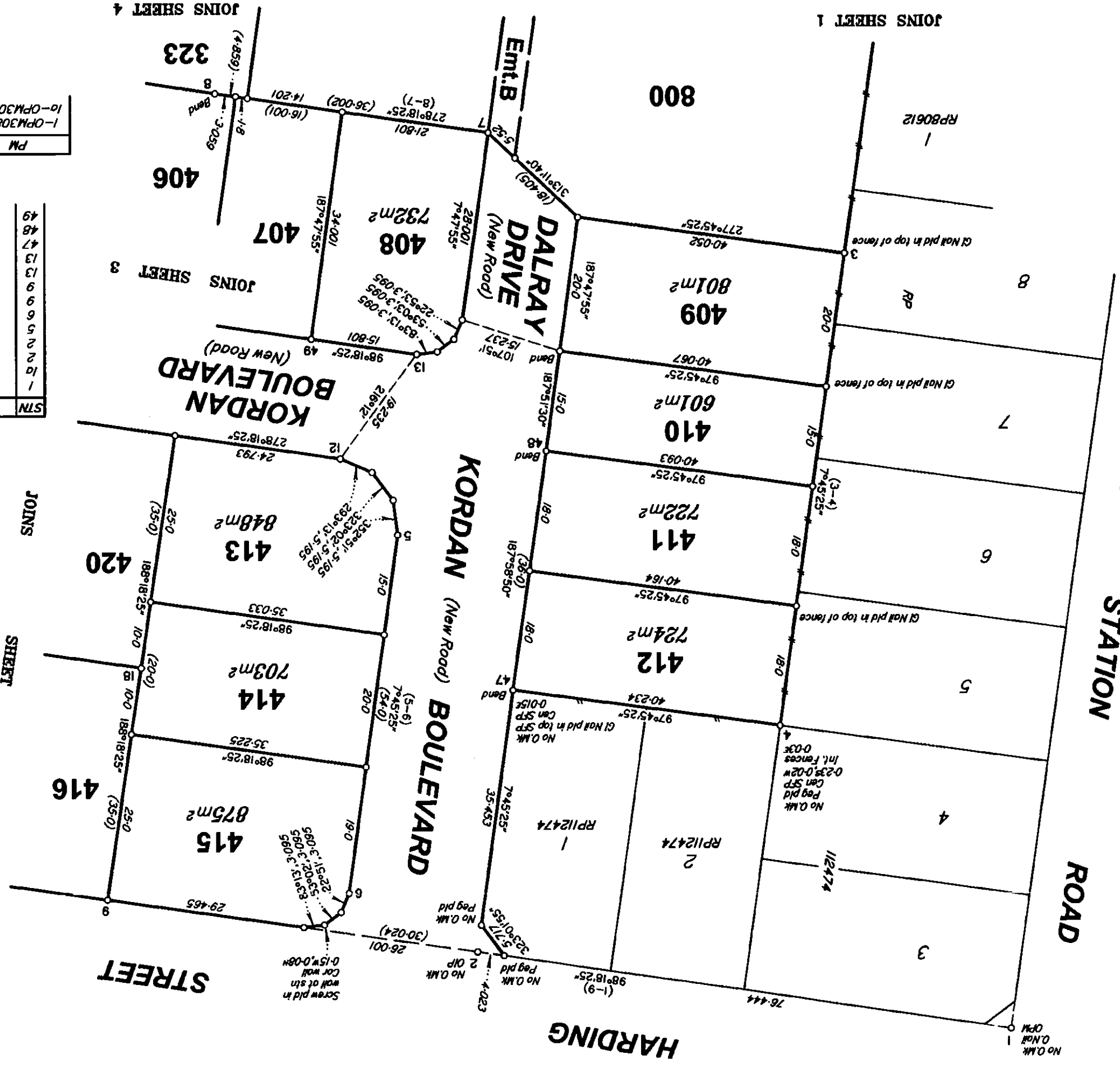
State copyright reserved.

STN	TO	ORIGIN	BEARING	DIST
1	O.Nail in kb	6/SP131616	359°46'15"	15.148
2	OIP	5/SP131616	277°45'25"	0.97
2	Screw in conc		88°56'20"	3.748
5	Screw in kb		191°59'50"	9.983
5	I Pm		336°39'30"	6.241
9	Screw in kb		300°45'	14.142
9	Screw in conc		43°28'	18.863
13	I Pm		281°32'	3.777
13	Screw in kb		344°52'05"	6.284
47	Screw in MH		197°52'	0.631
48	Screw in conc		88°16'30"	7.993
49	I Pm		262°26'10"	4.189

NO	DIST	BEARING	ORIGIN	PM
1-OPM30839	0.431	Standard	RP182253	5/SP131616
1-OPM30840	0.736	Standard	345°44'45"	281°25'25"

PERMANENT MARKS

REFERENCE MARKS



Scale: 1:600



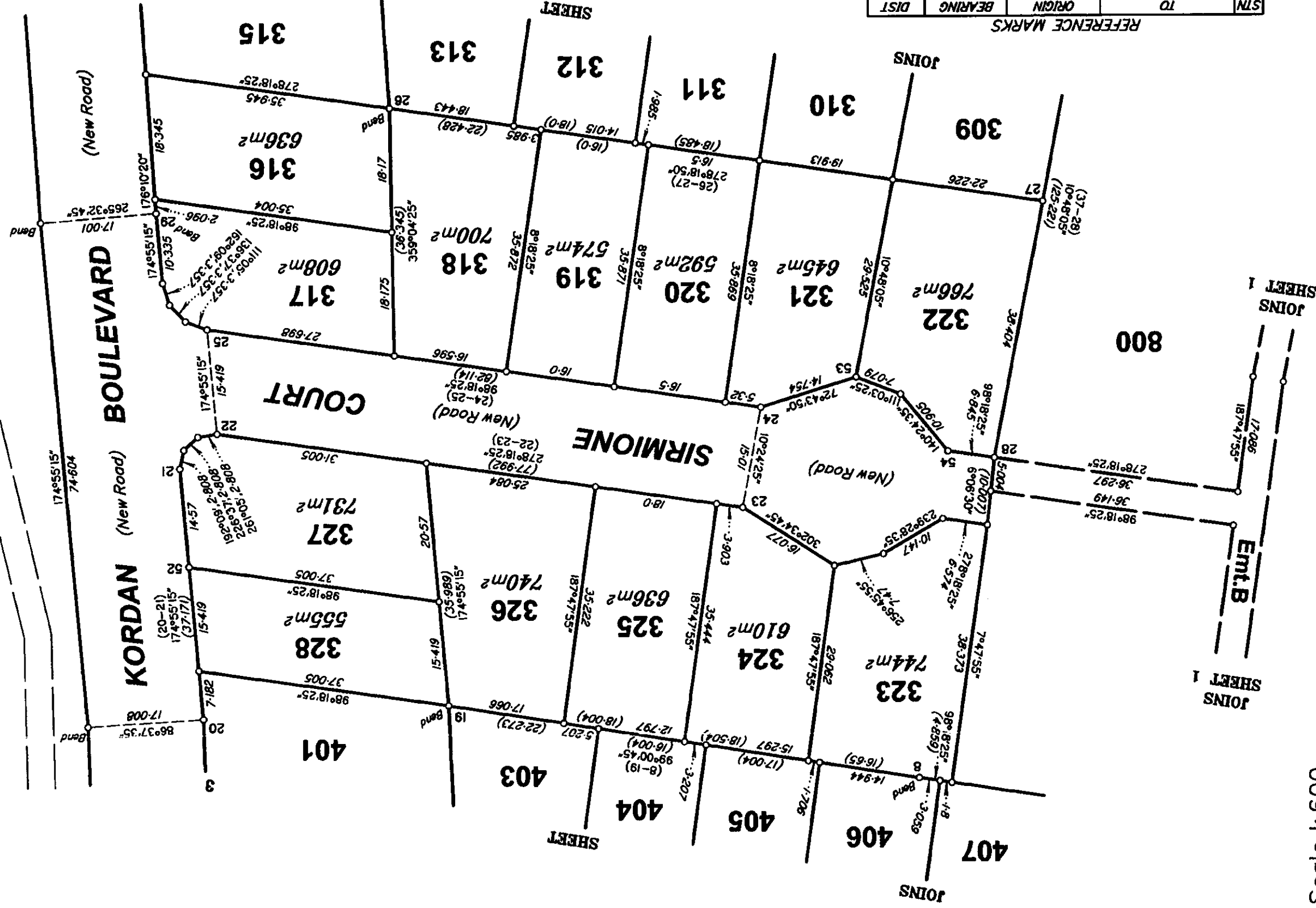
State copyright reserved.

Insert Plan Number
SP221968



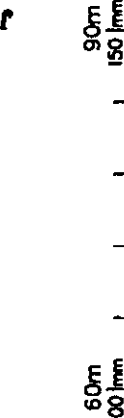
EMTA
RP182253

800

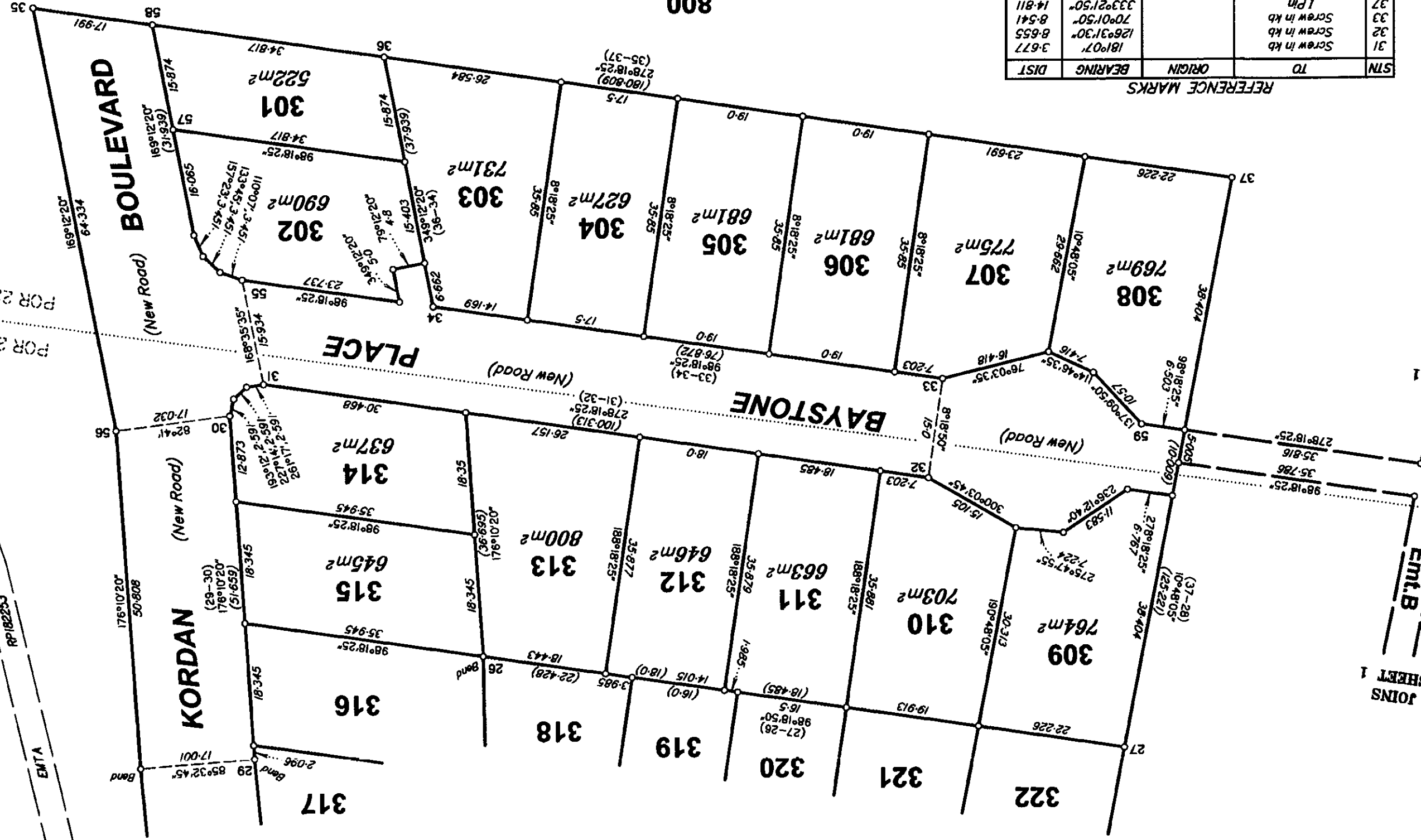
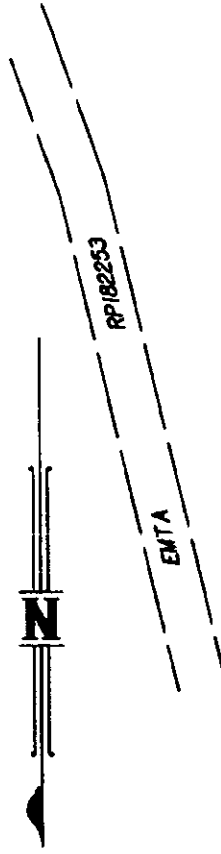


STN	TO	ORIGIN	BEARING	DIST
21	Screw in kb	122°44'10"	16.459	
22	1 Pin	85°03'30"	4.55	
23	Screw in kb	140°32'05"	6.174	
24	Screw in kb	61°59'05"	6.904	
25	Screw in kb	37°10'15"	4.905	
27	1 Pin	338°56'45"	12.279	
29	Screw in kb	109°50'25"	4.466	
52	Screw in kb	62°04'	4.449	
53	1 Pin	7°26'20"	1.26	
54	Screw in kb	80°06'	5.524	

Scale 1:600



State copyright reserved.
Insert Plan Number
SP221988



Scale 1:600



STN	TO	ORIGIN	BEARING	DIST
31	Screw in kb		181°07'	3.677
32	Screw in kb		126°31'30"	8.655
33	Screw in kb		70°01'50"	8.541
37	1 Pn		333°21'50"	14.811
55	Screw in kb		347°35'	4.404
56	Screw in kb		187°07'	12.976
57	Screw in MH		305°42'25"	1.918
58	1 Pn		70°42'30"	0.433
59	1 Pn		109°48'40"	1.2
	Screw in kb		84°23'	6.149

State copyright reserved.
Insert Plan Number
SP221968

